



EXCHANGE PROGRAMME FACT SHEET

ACADEMIC YEAR 2018/2019

School address (Campuses)

Master Programs building & International Office:

Volkhovskiy Pereulok - 3,
St. Petersburg, 199004, Russia

Bachelor Programs building:

Mikhailovskya Dacha Campus:
Sankt-Peterburgskoye Shosse, 109,
Peterhof, St. Petersburg, 198515, Russia

Postal Address to send documents to

Please, send all the documents regarding
exchange matters and international
cooperation with GSOM to the International
office address

Website

www.gsom.spbu.ru/en/

International Office Contacts

Volkhovskiy Pereulok - 3,
St. Petersburg, 199004, Russia
+7 812 323 84 47

exchange@gsom.pu.ru

[http://www.gsom.spbu.ru/en/international_](http://www.gsom.spbu.ru/en/international_general/contacts/)
[general/contacts/](http://www.gsom.spbu.ru/en/international_general/contacts/)

Head of the office (agreements, general cooperation issues):

Ms. Alisa Stepanova a.e.stepanova@gsom.pu.ru

Outgoing students: Ms. Ekaterina Baranova

e.v.baranova@gsom.pu.ru

(replacing Ms. Anastasia Svidzinskaya)

Incoming students: Ms. Ekaterina Soloveva

ekaterina.soloveva@gsom.pu.ru

Visa issues: Ms. Ekaterina Zhulanova

e.zhulanova@gsom.pu.ru

CEMS MIM Coordinator:

Ms. Daria Urbanskaya

daria.urbanskaya@gsom.pu.ru

+7 (812) 323-84-48

Nomination procedure & deadlines (proceeded by a partner)

While GSOM transfers its data to a new
platform, please inquire a link to proceed
with nominations directly from any GSOM
International Office team member.

Deadlines:

by April 1 for Fall semester

by October 15 for Spring semester

Application procedure (proceeded by a student)

After students are nominated to GSOM they
receive an e-mail with further instructions
necessary for their application.

The application deadlines are:

April 15 for Fall semester

October 25 for Spring semester

Free mover options

A student who is not officially nominated by a partner University or is coming from the University that has no student exchange agreement with GSOM SPbU can be accepted for a semester as a free mover student (on a fee-paying basis):

http://gsom.spbu.ru/en/gsom/international_general/free_mover/

Documents required

The following documents must be attached to the student profile when applying:

- the latest university academic report (transcript) reflecting grades and GPA
- documentation for English language proficiency comparable to the minimum level expected: TOEFL iBT 80/ IELTS 6.0 or B2 on a test administered by a teacher qualified to work with CEFR
- a resume/CV
- passport copy (which must be valid for min 18 months since mid-August for those arriving in Fall; since mid-January for those arriving in Spring).
- if you plan to take courses which are taught in Russian: a certificate or confirmation letter from your school on your proficiency in Russian (level B2).

Academic calendar	Fall semester (expected) *	Spring semester (expected) *
	01.09. – 23.01. (Masters) 01.09. – 31.01. (Bachelors)	11.02. – 30.06. (Masters) 11.02. – 06.07. (Bachelors)

Preliminary Arrival date	Starting from 23.08. (to be reconfirmed annually by announcing to the students)	Starting from 01.02. (to be reconfirmed annually by announcing to the students)
---------------------------------	---	---

Preliminary Introduction days	24.08. – 31.08. (to be reconfirmed annually by announcing to the students)	04.02. – 10.02. (to be reconfirmed annually by announcing to the students)
--------------------------------------	--	--

Exams	Fall semester (expected)	Spring semester (expected)
	Midterms: late October – early November; Finals: Masters: until mid-January Bachelors: until the end of January	Midterms: mid March – April Finals: Masters: until late June Bachelors: until early July

**All dates may change slightly.*

You should not plan ANY trips (including your return date) until you have an exam schedule with dates of mid-term and final assessment for all the courses you are registered for. You can resit ONLY midterm exams during the official resit period established at GSOM.

Note that GSOM doesn't provide with the alternative exam arrangements except for the documentally supported emergencies.



INTRODUCTION PERIOD

It is highly recommended to participate in the Introduction Period. It will include a tour around GSOM SPbU, information meetings with key persons and Russian language crash course. There is also a concurrent social and cultural program, organized by GSOM Buddy Team, held in the evening and at the weekend on which all registered incoming students will receive information prior to their arrival.

Note: On the first days of the Intro period, all exchange students will need to deal with the registration at Federal Migration Service; thus coming to Int.Office right upon arrival is a must.

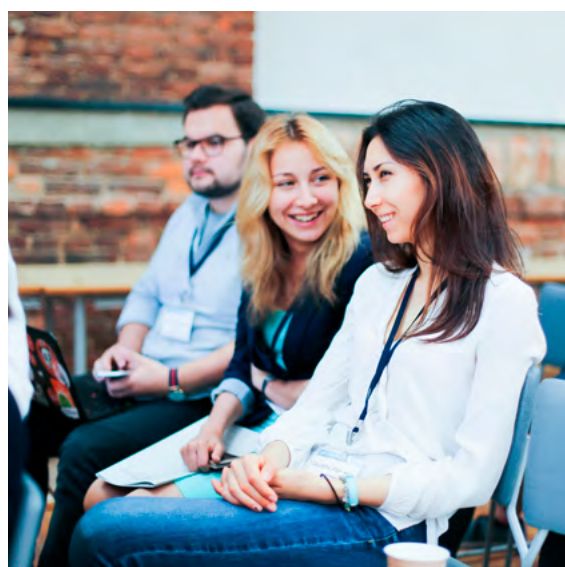
DOING BUSINESS IN RUSSIA

Twice a year at the very beginning of the semester a three week intensive module Doing Business in Russia is held for all newly arrived international students* at GSOM. Students are encouraged to ask still more questions and to get below the surface of preconceived ideas about living and working in Russia.

Check the latest course description here:

<https://drive.google.com/drive/folders/0B1azLMkPaZ9laGNTbGE3ZW9QVzA>

**there is limited number of slots opened to Bachelor students. The course must not overlap more than 4h with other courses a student is attending. A.Y. 2018-2019: the course is unavailable for CEMS students*



Full-time workload

The expected academic load equals 30 ECTS/semester (including a Foreign language course). If you are not able to take a full workload, you must enclose a statement from your home university confirming it. Class attendance is mandatory and crucial (your grade or right to sit for the final exam can be affected by absence in the class). NOTE: The courses taught at GSOM are divided into two types: the pass/fail courses which are assessed on a pass/fail basis with additional information about a student's result in a 100 points scale and the exam courses, assessed in accordance with the national grading system and overall result in 100 points scale.

Courses for Exchange Students

The most recent course offer can be found here:

<https://drive.google.com/drive/folders/0B1azLMkPaZ9IV2t4RXNSckhSSXc>

The list is reviewed (slightly changed) annually and published once confirmed before the start of each semester.

Special study conditions due to medical reasons

In case it is officially prescribed for a student to study under special conditions due to medical reasons, it must be supported upon the student's arrival by presenting to the International office an official medical document stating certain conditions to be taken into account. The document must be translated into Russian.

Accommodation

A place in SPbU dormitory (shared rooms for 2-3 students) is automatically provided to all international students. Master exchange students are placed in ulitsa Kapitanskaya, dom 3, max. 30 min by public transportation from GSOM. The incoming bachelor exchange students are offered a space in ulitsa Khalturina, dom 15/1, Peterhof, approx. 20 min to the Mikhailovskaya Dacha campus. The cost of a place is 4961 Rub (year 2018, subject to change) per 31 days. This option allows to quickly get a social network and helps to save money, still you must be ready to accept basic living conditions and restrictive rules on your behavior. You must also understand that upon your arrival you will be allocated a place in the dormitory in accordance with the order confirmed by the University, i.e. you will not have the chance to choose a roommate (and we at GSOM have absolutely no influence on this).

Individual application for the dormitory

Not required. The application is done automatically for all exchange students before the start of each semester, except for those who specifically indicate that they would prefer to rent a private place on their own.

Private accommodation

Students may stay «off-campus» but must arrange for this independently. Monthly rent for a 1 bedroom apartment ranges from 30,000 Rubles and higher. There are many options on the internet as well as some tips in the GSOM exchange student Facebook group. GSOM doesn't accumulate this kind of information and is not entitled to advice on the matter.

Health Insurance

A sufficient medical insurance covering the whole period of your stay in Russia is a must not only to avoid extra expenses connected with possible health problems or accidents but will also be required from you when extending your single entry visa.

NB: For some nationalities the absence of documentation for valid medical insurance can be a reason for rejection of a visa application.

Visa

An official letter of invitation from GSOM SPbU is required to apply for a visa. The process of issuing an invitation takes 4 weeks. To get both an invitation and then a visa, the passport must be valid for min 18 months since the date of the validity of the invitation (since mid-August for those arriving in Fall semester; since mid-January for those arriving in Spring semester). According to Russian Federation legislation, students may only request a 90 day Russian student visa with a single entry. Upon the arrival students are officially enrolled into exchange studies at GSOM SPbU (7-10 working days), after which they are able to apply for a multi-entry visa. The processing time of extending visa is 5 weeks. You should not therefore plan to travel outside of SPb during this period.

AVOID making travelling plans until you submit your passport for visa extension.

Booking return tickets

AVOID booking your return ticket until you know the exact dates of the semester confirmed by the academic offices (as a rule announced to you with the relevant course lists) as the date of the end of the semester will be the date when your visa expires.

Otherwise you risk being forced to change your tickets.

GSOM also does not recommend to plan your return date until you have an exam schedule with dates of final assessment for all the courses you are registered for.

Conditions and cost of living

There are many shopping centers in SPb with the same range of goods as everywhere in the world as well as a number of local markets, convenience stores with the most common daily goods and 24/7 supermarkets.

Public transportation (per ride): bus, 40 R., metro 45 R., and the semi-private minibusses, marshrutkas – 50 R. Once your official registration at SPbU is in place, you will also be entitled to a special student discount on public transportation – student public transport card.

Living costs depend on life style and spending habits. On average an international student spends about 25,000 -30,000 RUR (excl. rent)*. A hot meal in the GSOM cafeteria with soup or salad and a main course and a glass of a fruit drink: 250 R.

See more examples of specific prices here:

http://www.numbeo.com/cost-of-living/city_result.jsp?country=Russia&city=Saint+Petersburg

<http://www.internations.org>

Public Holidays

Fall Semester

November 4 – National Unity Day

January 1-7 – New Year Holidays

January 7 – Orthodox Christmas

Spring Semester

February 23 – Defender of Motherland's Day

March 8 – International Women's Day

May 1 – Spring and Labor Day

May 9 – Victory Day

June 12 – Russia National Day

NOTE: Please be aware that sometimes when a public holiday is extended to create a long weekend, that an extra working day can assigned on proceeding or following Saturday or Sunday. Any classes held on such a day are compulsory.



We look forward to welcoming you at St. Petersburg University and GSOM!

GSOM official video:

https://youtu.be/l9Cke_y8MDU

Video from students contest "My GSOM":

https://www.youtube.com/watch?v=m_j-DjmLEr4&index=9&list=PLtY_wkupmXVjtCjelnTKMHorLvzjXtgfM

https://www.youtube.com/watch?v=O80XutTBI04&list=PLtY_wkupmXVjtCjelnTKMHorLvzjXtgfM&index=10

Join our business family

https://www.youtube.com/watch?v=lmaK0Med3y8&list=PL1dj_Dsanf1DudZA_ubBtBAgYEXZUFCry&index=4

CEMS Annual Events St.Petersburg 2015

https://www.youtube.com/watch?v=YcjlYhzy1mc&index=2&list=PL1dj_Dsanf1DudZA_ubBtBAgYEXZUFCry

